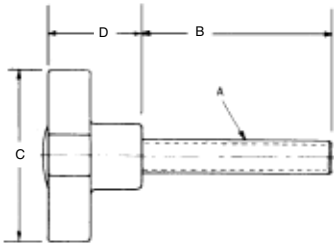


## Hand Knob Screws

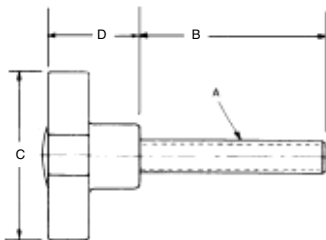


Cast Iron PART #	Aluminum PART #	Thread A	B	C	D
HKS-2510	HKS-2510A	1/4-20	1	1-1/2	7/8
HKS-2515	HKS-2515A	1/4-20	1-1/2	1-1/2	7/8
HKS-2517	HKS-2517A	1/4-20	1-3/4	1-1/2	7/8
HKS-2520	HKS-2520A	1/4-20	2	1-1/2	7/8
HKS-2530	HKS-2530A	1/4-20	3	1-1/2	7/8
HKS-3117	HKS-3117A	5/16-18	1-3/4	2	1
HKS-3125	HKS-3125A	5/16-18	2-1/2	2	1
HKS-3130	HKS-3130A	5/16-18	3	2	1
HKS-3712	HKS-3712A	3/8-16	1-1/4	2	1
HKS-3717	HKS-3717A	3/8-16	1-3/4	2	1
HKS-3720	HKS-3720A	3/8-16	2	2	1
HKS-3725	HKS-3725A	3/8-16	2-1/2	2	1
HKS-3730	HKS-3730A	3/8-16	3	2	1
HKS-5015	HKS-5015A	1/2-13	1-1/2	2-1/2	1-1/2
HKS-5017	HKS-5017A	1/2-13	1-3/4	2-1/2	1-1/2
HKS-5020	HKS-5020A	1/2-13	2	2-1/2	1-1/2
HKS-5025	HKS-5025A	1/2-13	2-1/2	2-1/2	1-1/2
HKS-5030	HKS-5030A	1/2-13	3	2-1/2	1-1/2
HKS-6217	HKS-6217A	5/8-11	1-3/4	2-1/2	1-1/2
HKS-6225	HKS-6225A	5/8-11	2-1/2	2-1/2	1-1/2
HKS-6230	HKS-6230A	5/8-11	3	2-1/2	1-1/2
HKS-6235	HKS-6235A	5/8-11	3-1/2	2-1/2	1-1/2

- Hand knob available in cast iron or aluminum
- Steel screw with black oxide finish
- Screw is pressed and held in place with a spring pin

Aluminum PART #	Thread A	Fine Thread		
		B	C	D
HKS-825A	1/4-28	1-3/4	1-1/2	7/8
HKS-831A	5/16-24	1-3/4	2	7/8
HKS-837A	3/8-24	1-3/4	2	7/8
HKS-850A	1/2-20	1-3/4	2-1/2	1-1/2
HKS-862A	5/8-11	1-3/4	2-1/2	1-1/2

## Stainless Steel Hand Knob Screws



- Aluminum hand knob
- 303 stainless steel screw
- Screw is pressed and held in place by a roll pin

PART #	Thread A	B	C	D
HKS-2517A-SS	1/4-20	1-3/4	1-1/2	7/8
HKS-2530A-SS	1/4-20	3	1-1/2	7/8
HKS-3117A-SS	5/16-18	1-3/4	2	1
HKS-3130A-SS	5/16-18	3	2	1
HKS-3717A-SS	3/8-16	1-3/4	2	1
HKS-3730A-SS	3/8-16	3	2	1
HKS-5017A-SS	1/2-13	1-3/4	2-1/2	1-1/2
HKS-5030A-SS	1/2-13	3	2-1/2	1-1/2
HKS-6217A-SS	5/8-11	1-3/4	2-1/2	1-1/2
HKS-6230A-SS	5/8-11	3	2-1/2	1-1/2